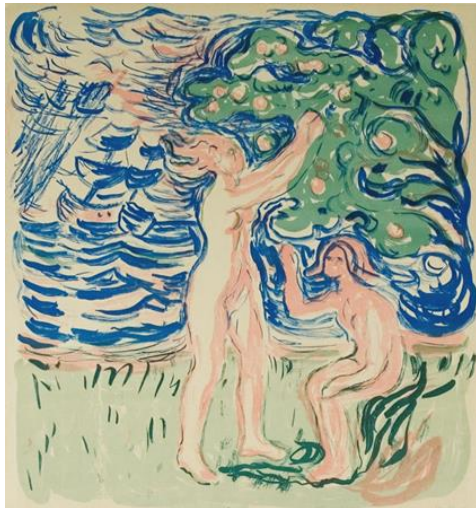


TACOMA ART MUSEUM

MEDIA RELEASE

March 16, 2016

Media Contact: Julianna Verboort, 253-272-4258 x3011 or JVerboort@TacomaArtMuseum.org



EDVARD MUNCH AND THE SEA: SEE BEYOND *THE SCREAM*

Tacoma, WA — Travel from the shores of Puget Sound to the fjords of Norway with the exhibition [Edvard Munch and the Sea](#), on view exclusively at Tacoma Art Museum April 9 through July 17, 2016. This is your opportunity to dive deep into Munch's powerful works, rarely exhibited in the Pacific Northwest, with 26 of his exceptional prints and a key painting. TAM has brought these dynamic works to Tacoma from major institutions across the country, including the National Gallery of Art, the Metropolitan Museum of Art, Museum of Modern Art, deYoung Museum, Los Angeles County Museum of Art and from private collectors.

“While he's best known for his iconic work *The Scream*, Munch explored a host of other subjects. This exhibition focuses on the sea as a profound element in his work. He used the sea as the subject of landscapes, as a backdrop for human interactions, and as a metaphor for love, longing, grief, joy, and other tumultuous emotions,” shared Margaret Bullock, Curator of Collections and Special Exhibitions. He sought to live and work by the sea, often painting outdoors in the Norwegian landscape. Munch would likely have felt at home on Puget Sound.

This exhibition honors [Pacific Lutheran University's](#) 125th anniversary and Norwegian heritage. “The university reached out to TAM as a fellow cultural cornerstone in our community to open conversations about marking this significant moment in PLU's history. In celebration of the university's contributions to the arts in our region, and honoring our founding Norwegian pioneers, we were interested in working with TAM to engage people with the rich artistic history of Norway,” explained Tom Krise, PLU's president.

The Honorary Norwegian Consul Kim Nesselquist connected TAM's curators with art collector [Sally Epstein](#), who has amassed the largest private Munch print collection outside of the Munch Museum in Oslo, Norway. A core group of the prints in the exhibition are from her collection. Epstein's persistent interest in Munch took her to his homeland multiple times as she sought to learn more about the artist and his work. A fascinating person in her own right, Epstein has lectured on Munch at the National Gallery and other institutions. Hear directly from her during a Collector's Conversation at TAM on Sunday, April 10, 2 pm, as she shares stories about her expeditions into the landscapes and history of this complex and influential artist.

A leading artist of the [expressionist](#) and [symbolist movements](#), Munch often used the sea to convey emotions and moods. His depictions of women are complex as well, revealing his experiences with relationships, loss and grief in scenes played out on rocky shores and sinuous coastlines.

“Munch was a person who experienced life intensely, who felt deeply, and his images reflect that. These are very strong images with many layers of meaning,” Bullock elaborated. “*Neutralia* for example isn’t just two women happily picking apples in the springtime. It is about joy in nature, but it is more importantly a political statement. There is a boat in the background being overwhelmed by waves, a ship going down, which represents Europe. He’s telling us that he was not happy that Norway remained neutral in World War I, going on with daily life, while the rest of Europe was struggling.”

In 2012, Munch’s famous 1895 pastel [The Scream](#) became the world’s most expensive work of art ever auctioned (at the time) at Sotheby’s. Although *The Scream* won’t be on view, the print *Angst* features the same setting – the Åsgårdstrand pier at sunset – and mask-like fraught faces. Both images are raw expressions of Munch’s lifelong battles with anxiety and loneliness. Several other prints in the exhibition include elements of *The Scream*, as Munch liked to work and rework the same motifs. TAM has also arranged to have on view Andy Warhol’s 1984 screenprint tribute *The Scream (after Munch)*.

Munch was a master printmaker, advancing new techniques and mastering all aspects of his craft. TAM has highlighted the Northwest’s passion for printmaking in numerous exhibitions (recall 2014’s positively-received [Ink This!](#)), and the Munch exhibition continues the museum’s interest in exploring the artistry of printwork. By his own estimations, the prolific Munch created some 30,000 impressions of his prints. This exhibition reflects the vast influences of Edvard Munch on printmakers and artists today.

Edvard Munch and the Sea kicks off with a Members’ Opening party on the evening of April 9, followed by the Collector’s Conversation with Sally Epstein and TAM’s executive director Stephanie Stebich on April 10. Related events include a hands-on printmaking workshop with PLU arts instructor and designated master printer Craig Cornwall, a sketching workshop led by artist Darsie Beck, an Educator’s Evening at TAM, an I-Scream social, a coloring contest, and additional activities at the PLU campus. Check www.TacomaArtMuseum.org for more information.

Edvard Munch and the Sea is organized by Tacoma Art Museum and honors [Pacific Lutheran University’s](#) 125th anniversary and Norwegian heritage. It is generously supported by [Propel Insurance](#), [Nordstrom](#), [ArtsFund](#), and Pacific Lutheran University.

###



Image Credits:

Edvard Munch (1863-1944), *Neutralia (Girls Picking Apples)*, 1915. Color lithograph, 22½ × 20¹³/₁₆ inches. Memorial Art Gallery of the University of Rochester: Marion Stratton Gould Fund, 72.12. © 2016 Artists Rights Society (ARS), New York.

Edvard Munch (1863-1944), *Angst*, 1896. Color lithograph, 16½ × 15⅞ inches. Epstein Family Collection, EFC061.0. Photo by Philip Charles. © 2016 Artists Rights Society (ARS), New York.

Edvard Munch (1863-1944), *On the Waves of Love*, 1896. Lithograph, 12¼ × 16½ inches. Epstein Family Collection, EFC073.0. Photo by Mark Gulezian. © 2016 Artists Rights Society (ARS), New York.

Edvard Munch painting on the beach at Warnemünde, 1907 (detail). © Munch Museum, Oslo.

Related Programs and Events:

Members' Opening Celebration, Saturday, April 9, 6 – 9 pm, Location: TAM

Revel in Munch's deeply personal relationship with the sea and its symbolism in his work—as a solitary subject, a backdrop for summer holiday makers, or as a dramatic reflection of intense emotions. Enjoy hors d'oeuvres, a cash bar, lively music, and a photo booth. Cost: Free for members, \$20 general, \$10 student with ID. Email RSVP@TacomaArtMuseum.org by April 1. Members' opening in-kind support provided by Heritage Distilling Co.

Conversation with the Collector: Sally Epstein, Sunday, April 10, 2 pm, Location: TAM

A core group of prints in *Edvard Munch and the Sea* are from the exceptional collection of Sally Epstein, who has amassed the world's largest private Munch print collection outside of the Munch Museum in Oslo, Norway. Hear directly from her and Stephanie Stebich, TAM's Executive Director, at 2 pm on Sunday, April 10 as she shares stories about her expeditions into the landscapes and history of this complex artist. Enjoy a reception following the talk. Cost: \$5 member/student with ID, \$10 general. Tickets available at www.TacomaArtMuseum.org/Events.

Printmaking with Craig Cornwall, Saturday, April 16, 12 – 4 pm, Location: TAM

Inspired by Munch's experimental and prolific printmaking career, join artist Craig Cornwall for a printmaking workshop that covers etching and drypoint. Cornwall is a Master Printer in lithography trained at the world-renowned Tamarind Institute. He has taught workshops all over the country and operates a professional print workshop working with other artists to produce limited edition prints. Cost: \$50 for members, \$60 for non-members.

Educator Evening with *Edvard Munch and the Sea*, Thursday, April 21, 5 – 8 pm, Location: TAM

Educators are invited to explore the exhibition *Edvard Munch and the Sea*. Enjoy complimentary refreshments, discover museum resources, and meet fellow educators. Free. Pre-register by emailing Education@TacomaArtMuseum.org with your full name and school.

Munch and Medicine, Saturday, April 23, 4 pm, Location: [Scandinavian Cultural Center at Pacific Lutheran University](#)

[Allison Morehead](#), Associate Professor of Art History at Queen's University, will speak on the topic of "Munch and Medicine." Learn about her ongoing research as part of an international project titled "Munch, Modernism, and Medicine" and how it relates to the works on view in Tacoma Art Museum's exhibition *Edvard Munch and the Sea*. Morehead will weave together evidence of Munch's interest in the sea with medicine and health through his works such as *Alpha and Omega* and his depiction of the New Woman as a nurse. Morehead will also be a guest judge for the student exhibition *Inspired by Munch*, which will be on view in the Scandinavian Cultural Center.

Lunch and Learn with Margaret Bullock, Wednesday May 4, 12 – 1 pm, Location: TAM

Bring a lunch or pick up something delicious at the TAM Cafe and join TAM's Curator of Collections and Special Exhibitions Margaret Bullock in the Events space. Bullock will share the ups and downs of curating an exhibition about the fascinating life and work of artist Edvard Munch. Cost: Free lecture, museum admission is *not* required.

Dreamscapes: Munch, Memory, and the Sea, Thursday, May 12, 7 pm, Location: [Scandinavian Cultural Center at Pacific Lutheran University](#)

[Patricia Berman](#), Theodora L. and Stanley H. Feldberg Professor of Art at Wellesly College, will present a lecture titled “Dreamscapes: Munch, Memory, and the Sea.” From 2010-2015, Berman held a faculty position at the University of Oslo (Norway), where she was heavily engaged in research about Edvard Munch. She has curated several exhibitions focused on his work, including the 2006 *Edvard Munch and the Modern Work of the Soul* at the Museum of Modern Art in New York City.

[Waterfront Sketching Workshop with Darsie Beck](#), Saturday, July 16, 11 - 1:30 pm, Location: TAM

In a workshop inspired by Munch’s love of the sea, join artist Darsie Beck and learn how to create your own travel journal sketch book. Enhance your travel experience and learn the centering qualities of keeping a sketch journal. Beck has taught travel journal sketch workshops for Rick Steves travel groups, the Seattle Public Library, Centrum and the Northwest Maritime Center in Port Townsend. Most recently Beck’s work was exhibited at Washington State University Pullman and the Northwest Maritime Center in Port Townsend. Cost: \$20 members, \$25 non-members.

About Tacoma Art Museum

Celebrating 80 years, Tacoma Art Museum is become an anchor in the city’s downtown and a gathering space for connecting people through art. TAM’s collection contains more than 4,700 works, with an emphasis on the art and artists of the Northwest and broader western region. The collection includes the world’s largest retrospective museum collection of glass art by Tacoma native Dale Chihuly on continued view; the world’s largest collection of jewelry by Northwest artists; key holdings in 19th century European and 20th century American art; and one of the finest collections of Japanese woodblock prints on the West Coast. TAM recently welcomed a promised gift of 295 works of western American art in the Haub Family Collection, one of the premier collections in the nation and the first major western American art museum collection in the Northwest, and in 2016 announced the gift of the Rebecca and Jack Benaroya Collection with 250 works of art.

HOURS – Tuesdays–Sundays 10 am – 5 pm

ADMISSION – Adult \$14; Student age 6-17, Military, Senior (65+) \$12; Family \$35 (2 adults and up to 4 children under 18). Children 5 and under free. **Third Thursdays free from 5–8 pm.** Members always free.

CONTACT – 253-272-4258, <http://www.TacomaArtMuseum.org>